

ps ceramics



w i n t e r Studio Update

Hello!

Winter has well and truly arrived in Tassie! The mountains are dusted with snow, the days are short, but slowly lengthening, and the midday sunshine feels like such a gift. While it's chilly outside, it's the perfect season to bunker down in the studio and get plenty of pots made.

Workshops have been keeping me busy, and it's been such a joy meeting new people and helping them create their own ceramic masterpieces. You can see some of the exciting projects we've been working on below.

I'm also steadily preparing for the Tasmanian Craft Fair in November, where I'll be joining two of my pottery friends—Anna of Fulton Creek Ceramics and Jo of Josephine Ceramics—as the Coastal Collective. I'll have all my current lines available, along with two new ranges I've been developing: ash glazes and mountain-inspired layered glazes.

On top of that, there are a couple of upcoming TCA exhibitions in Campbell Town and Hobart. I'm busy finishing and firing work for those—fingers crossed the kiln gods are kind! If you're nearby, I'd love for you to check them out.

Thanks so much for following along, and feel free to drop me a line anytime.

Paula xx





a s h range

Come explore my recent projects, where the exploration of new finishes and techniques is always ongoing.

Lately, there has been a focus on experimenting with Ash Glazes, resulting in some truly lovely pieces being added to the shop. If you love ceramics and the endless possibilities it offers, be sure to read more about these recent projects below or check out some of the pieces in the shop.

[See the ash range](#)



testing

With every new direction in ceramics comes a mountain of testing before a piece ever makes it into an exhibition or the shop. Whether it's trialling a new clay body—testing all the glazes for compatibility and variation—or developing an entirely new glaze that must be tried across each clay type, the process is both time-consuming and fascinating.

Lately, I've been particularly drawn to the Nuka Ash glaze on black clay (middle right picture). It has a cosmic quality—"galaxy" comes to mind—whereas on white clay the same glaze turns into a rather dull honey. This new ash series uses fire ash that I've processed and added in carefully measured amounts to an existing glaze recipe. As you can see in the top picture, even with the same formula, the outcome shifts dramatically depending on the clay beneath.

To get a full picture, I usually test all new glazes and combinations across four different clay bodies: white raku, #33 warm, black, and dark matter. This provides a broad spectrum of results and helps me see which pairings are most successful.

The next step is experimenting with application and layering order to achieve different effects. With this ash range, I've found that spraying the glaze gives some beautiful results—though at times wonderfully unpredictable.





a s h cup - wheel thrown with a handle, layered oxide and ash glaze on a smooth grey clay.

a s h cup



a s h bowl - wheel thrown, layered oxide and ash glaze on an iron rich red clay.

[See more](#)

exhibitions

Testing and planning for upcoming exhibitions with Tasmanian Ceramics Association has been progressing well.

Textured @ Harmony on High Street in Campbell town opening on 29th August to 24th September.

A sneak peek at the texture and colours of my piece using iron oxide and ash on a hand built vessel

Earth Works @ Sidespace Gallery Hobart - opening 27th August to 7th September
I have been testing and working on 2 very different pieces for this exhibition, a couple of pictures below of the pieces unfired.





Handbuilt with an iron rich clay, slips, oxides and underglazes.

More details and pictures in the next newsletter



Handbuilt using porcelain clay watercolour washes, inspired by the cradle mountain range.



wearable art

In the process of testing the above exhibition pieces I have created a collection of wearable art and wall hangings inspired by the Cradle Mountain vista, flora and fauna.

These pieces are made using Keanes Lumina Porcelain clay and a printing plate to capture the unique textures and shapes and then hand painted.

shop wearables



Collection of stud earrings all with stainless steel posts and backings

The ocean range of pendants features impressions of rocks, Tasmanian seaweeds, grasses and shells all found locally.



These porcelain hand painted pendants are all limited editions and one of a kind and will be available in the web shop soon.

mountain range

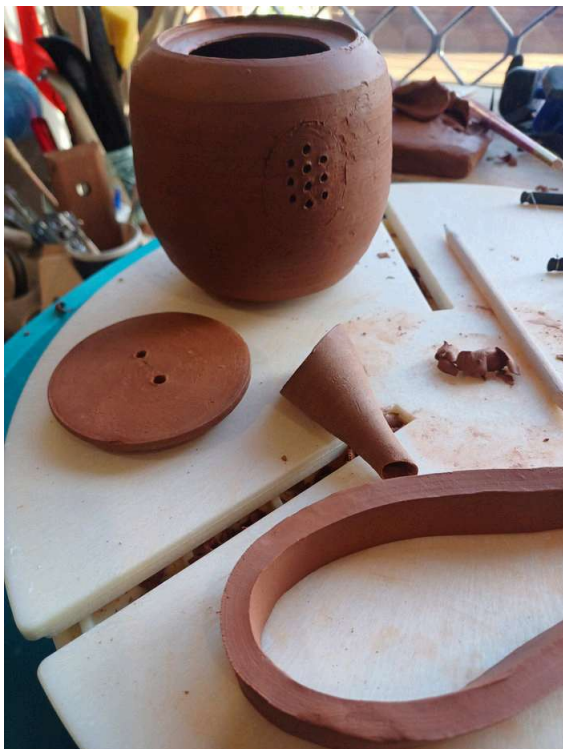
Wheel-thrown in smooth white clay, each vessel is glazed inside and out, with layered surface decoration evoking distant mountains, rocky terrain, and shoreline landscapes. Subtle glaze flows create atmosphere and movement, echoing the shifting moods of land and sea.



The interplay of glazes creates atmosphere and movement, echoing the rhythms of the coastline — moody greys of stone and cloud, deep blue waters, and soft sandy shores.

Together they capture the changing light and landscape in fluid, painterly layers.

mountain range



t e a for two

A teapot is a harmony of parts — body, spout, handle, and lid — each carefully measured, thrown, and joined at just the right moment. This piece is finished in my unique ash glaze combination, where soft earthy tones flow across the surface with natural variation and depth. Topped with a driftwood-inspired handle, it brings together function and quiet beauty.



A small selection of teapots will be available this November, or you can order one made just for you.

o r d e r teapot



w o r k s h o p s

Workshops continue to be busy and a great introduction to your own pottery journey, the "Mould your masterpiece" workshop has been a great success where participants can bring an idea or inspiration to the workshop and I help you bring it to life. It can get hectic at times when we are planning the method best suited for the project and sometimes we need to think outside the box, everyone has come up with some great projects like book ends, taco platters, gravy jug, clocks, table lamp and vanity sets just to name a few.

[Tell me more](#)



Upcoming workshop dates:

Saturday 27th September - Jugs & Vases

Saturday 4th October - Free choice

Sunday 19th October - Teacups & plates

w o r k s h o p gallery





Add your name to the future workshop list if you are interested in a future date or mid week option, which I will be offering over the Summer months.



[Register for future workshops](#)

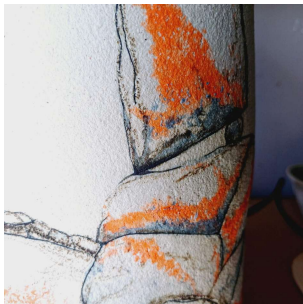


A special subscribers discount code

Use the following 10% discount code for all products purchased during Winter and Spring
(excludes workshops)

SPRING10

[Shop now](#)



PS. Ceramics | Handmade Tasmanian Pottery | Port Sorell TAS, Australia

PS. Ceramics - One-of-a-kind handmade Tasmanian pottery inspired by the landscape.

PS Ceramics Studio
ps.ceramics2@gmail.com

Share on social



Check out our site [→](#)